



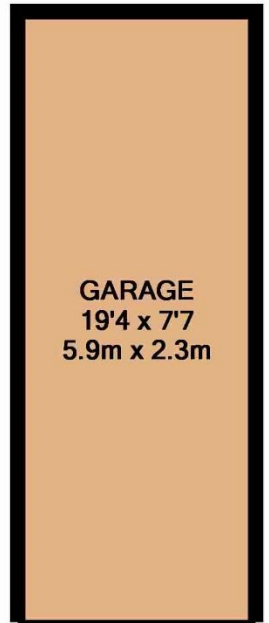
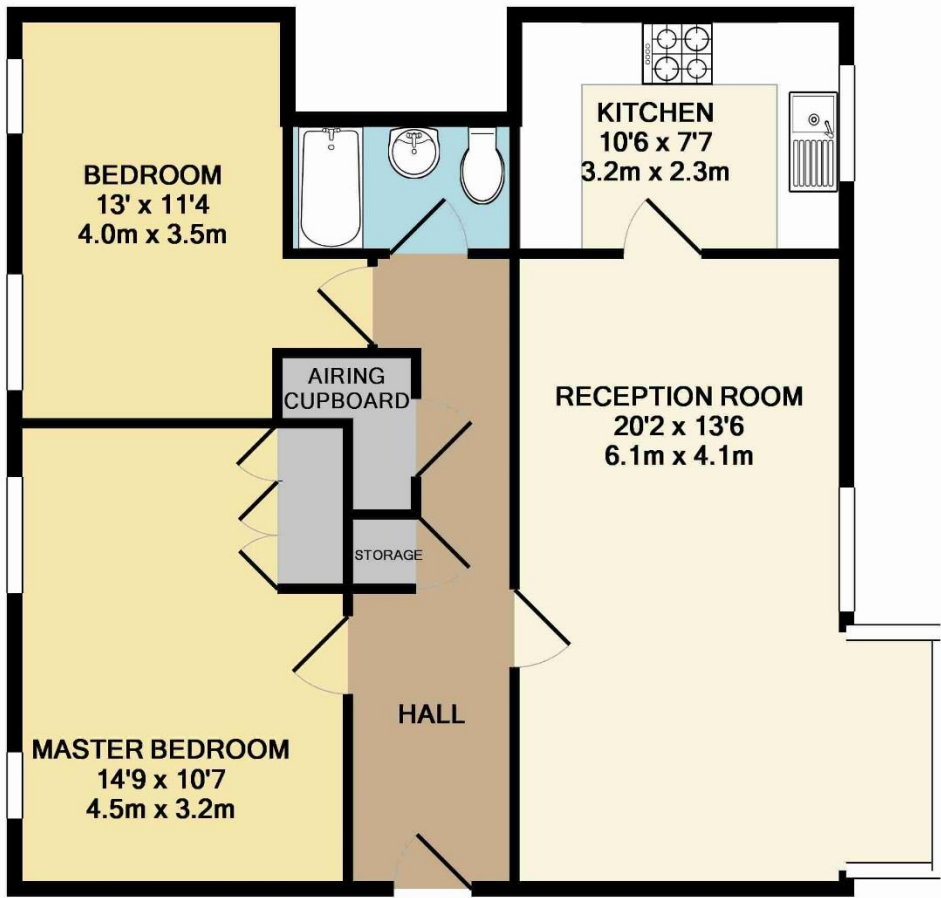
£369,950

Winchester Close, Enfield, EN1

- Two double bedroom
- First floor
- Communal parking
- Walking distance of Bush Hill Park Station
- Gas central heating & double glazing
- Garage
- Share of freehold

Grange Homes are pleased to offer this first floor, two bedroom flat for sale in Bush Hill Park. The property has two double bedrooms, spacious living room and dining area, kitchen, bathroom and storage space. It also benefits from a garage, communal gardens, communal parking, gas central heating & double glazing. Walking distance of Bush Hill Park Overground Station (Liverpool Street) and close to Enfield Town shopping centre. Share of freehold.





GARAGE
APPROX. FLOOR
AREA 146 SQ.FT.
(13.6 SQ.M.)

GROUND FLOOR
APPROX. FLOOR
AREA 730 SQ.FT.
(67.8 SQ.M.)

TOTAL APPROX. FLOOR AREA 876 SQ.FT. (81.4 SQ.M.)

Whilst every attempt has been made to ensure the accuracy of the floor plan contained here, measurements of doors, windows, rooms and any other items are approximate and no responsibility is taken for any error, omission, or mis-statement. This plan is for illustrative purposes only and should be used as such by any prospective purchaser. The services, systems and appliances shown have not been tested and no guarantee as to their operability or efficiency can be given

Made with Metropix ©2016